



BULLDOG® Adhesion Promoter System

Technical Data Sheet for Professionals – For Use in Non-VOC Regulated States*

GTPO123, QTPO123
PPC535, EPC535

Adhesion Promoter (Gal, Qt Liquid)
Abrasive Prep & Clean (16oz, 7.6 lb)



BULLDOG® Adhesion Promoter is the premier adhesion promoter for the auto body collision repair market. Bulldog® is a single-component product that combines an adhesion promoter, flex agent and blending aid in one. It is fast-drying and provides superior adhesion on all flexible and rigid plastic parts. **Bulldog® Abrasive Prep & Clean** is an advanced emulsion, combining water and solvent technologies. It removes wax, grease, and the mold release agents that can cause fisheyes. It is an excellent blend prep. We offer a Limited Lifetime Warranty† when using The Bulldog System as directed.

- Provides superior adhesion
- Works on pre-painted metal**, plastic (TPO, polypropylene and SMC) and aluminum
- Single component, ready to spray – no mixing required
- Dries clear in 5 minutes
- Adhesion Promoter and Flex Agent in one
- Unused product can be poured back into the can
- Tint with basecoat for visible color coverage
- Improves flake orientation and color consistency
- Improves melt-in and edge wetting
- GTPO123/QTPO123 – *Not for sale in CA, CO, CT, DE, MD, NH, RI and UT.

†Refer to www.kleanstripauto.com for details on Limited Lifetime Warranty.

Compatible Coatings: All solvent-based urethane, epoxy, or acrylic lacquers, primers, sealers and basecoats.

Compatible Surfaces: All common automotive plastics, as well as metal**, glass, aluminum, fiberglass, rubber, vinyl and painted surfaces. Bulldog is suitable for ground effects, new flexible and rigid bumpers, as well as plastic interior and exterior parts. (Always test in an inconspicuous area, as every surface is different. Always apply basecoats and clearcoats according to manufacturer's instructions). **Not recommended for use over bare metal.



GTPO123/OTPO123 DIRECTIONS FOR USE - PLASTIC:

Carefully read the entire product label and all precautions on the SDS prior to use. Proper preparation is critical to the success of all repairs. Follow these steps to achieve maximum performance.

1. Clean all areas to be painted with BULLDOG® Abrasive Prep & Clean using a gray scuff pad (refer to page 6 for instructions).
2. Rinse thoroughly with clean water, and blow dry the surface.
3. Tack dry surface thoroughly with a clean tack cloth. Do not press tack cloth firmly against surface, as tack material may transfer to bumper and cause defects.
4. If noticeable static remains on surface after blow drying and tacking, please use PREP ALL® Waterbased Anti-Static Panel Wipe as final wipe. Spray surface or pour on clean towel. Use wipe-on, wipe-off method, using clean towels in each hand to dry surface. Allow 3-5 minutes flash time before proceeding to next step.
5. Shake well and filter before each use to secure a uniform mixture. Apply a single, medium closed coat of BULLDOG® Adhesion Promoter over entire plastic surface. A properly applied film should appear uniform, continuous and free of any voids.
6. Allow 5 to 10 minutes before applying the next coating, or when tack free. *Dry times may vary based on temperature and humidity.*
7. Once tack-free, proceed with normal basecoat/clearcoat process, according to manufacturer's instructions.

GTPO123/OTPO123 DIRECTIONS FOR USE – PRE-PAINTED METAL SURFACES:

Carefully read the entire product label and all precautions on the SDS before use. Proper preparation is critical to the success of all repairs. Follow these steps to achieve maximum performance.

1. Remove all contaminants from the surface with KLEAN-STRIP® PREP-ALL® Wax & Grease Remover.
2. If the painted surface has been broken through to metal, then apply corrosion inhibitor or etch-primer, following manufacturers' instructions for application and dry times. **DO NOT** use BULLDOG® Adhesion Promoter on bare metal.
3. Clean the repair area with BULLDOG® Abrasive Prep & Clean, using a gray scuff pad. Rinse well with clean water and blow dry the surface.
4. Tack dry surface thoroughly with a clean tack cloth. Do not press tack cloth firmly against surface, as tack material may transfer to surface and cause defects.
5. If noticeable static remains on surface after blow drying and tacking, please use PREP ALL® Anti-Static Panel Wipe as final wipe. Spray surface or pour on clean towel. Use wipe-on, wipe-off method, using clean towels in each hand to dry surface. Allow 3-5 minutes flash time before proceeding to next step.



6. Shake well and filter before each use to secure a uniform mixture. Apply a single, medium closed coat of BULLDOG® Adhesion Promoter Plus over entire pre-painted metal surface. A properly applied film should appear uniform, continuous and free of any voids.
 7. Allow 5 to 10 minutes before applying the next coating, or when tack free. *Dry times may vary based on temperature and humidity.*
 8. Once tack free, proceed with normal basecoat/clearcoat finishing process, according to manufacturer's instructions.
-

Technical Data

Recommended Gun Setup:	HVLP Tip Size 1.2mm – 1.4mm
Air Pressure:	Refer to spray gun specs
Apply:	1 medium closed coat
Dry Film Thickness	1 Coat: 0.2 - 0.4 mils
Dry Times:	5 – 10 minutes @ 70F, or tack free **Dry times vary depending on temperature and humidity.
Tinting:	Mix 90% Bulldog with 10% basecoat for visible color coverage.
Flex Agent:	Ratio 1:4 Bulldog with basecoat Ratio 1:3 Bulldog with clearcoat

Cleanup: All tools and spills should be cleaned immediately with Naked Gun® Gold Gun Cleaner (CGC111) or Naked Gun® Spray Gun Paint Remover Aerosol (ENG11131). Clean spray gun according to manufacturer's instructions.

Notes:


- BULLDOG® has a 24-hour open time. If the part is left longer than 24 hours, tack, and apply 1 even, light coat of BULLDOG® before applying the next coating.
- BULLDOG® covers 400 grit scratches and above.
- This product may not be compatible with all surfaces and all conditions surrounding application. Before applying to any surface, always test in an inconspicuous area to ensure no damage will result.
- Not compatible with waterborne coatings.

Additional Tips for Using Bulldog Adhesion Promoter

1. Use Bulldog as a mid-coat adhesion promoter, effectively “tying” multiple layers of paint together. Great for use when doing special paint effects, such as flames, two-tone paint jobs, etc. Bulldog will also improve the flop/alignment of metallic pigments in blend-out areas.
2. When using Bulldog as an added flex agent in a clear, be sure to add the Bulldog after the clear has been catalyzed. (Ratio 1:3 Bulldog to mixed clear)
3. Bulldog can be added to primer in a ratio of up to 1:3.



4. Bulldog cannot be *mixed* with waterborne paint. However, Bulldog **can** be used in a waterborne system, as long as it is applied underneath the primer-sealer.
5. Treat bare metal to prevent corrosion. Bare metal and body filler must be primed and dry or wet sanded with 400 grit sandpaper prior to applying Bulldog.
6. Metal primer overspray onto plastic surfaces should be removed, as it can cause paint failure. Bulldog overspray onto plastic is not an issue.
7. Bulldog can be used on interior parts, such as dashboards, kick panels, visors, etc., prior to dyeing or painting. Solvent-based dyes can be mixed with Bulldog (up to 50%) before application.
8. Bulldog should not be used on Lexan® or polyethylene surfaces.
9. Abrading of the substrate is essential for successful coating application. We recommend the use of Bulldog Abrasive Prep & Clean on plastics, but even gentle scuffing with a red or grey scuff pad will greatly increase the bite of the coating. Bare metals, OEM painted surfaces, and previous repair coats should all be abraded prior to repainting.

TECHNICAL DATA:	GTPO123/QTPO123
Appearance	Clear, colorless to slightly hazy yellow liquid, mobile, dries to Class A water-white finish
Percent Volatile	82.75% by weight
Flash Point	32°F
CPSC Flammability Classification	Flammable
VOC Category (Max Allowable VOC)	Specialty Coatings (840 gm/liter)
Actual VOC	805 gm/liter 6.7 lbs/gal 91.6% by weight.
Storage	Store between 32°F and 95°F, in the original container.
Density	7.3 lbs/gal
Shelf Life	2 years from date of manufacture, in an unopened container
DOT	UN1866, Resin Solution, 3, PGII, Ltd. Qty
Prop 65	 This product can expose you to chemicals including Ethylbenzene and Styrene, which are known to the State of California to cause cancer and Toluene, which is known to the State of California to cause birth defects or other reproductive harm. For more information, go to www.p65warnings.ca.gov .
Restrictions	Not for sale in CA, CO, CT, MD, DE, NH, RI and UT.

ORDERING INFORMATION

Product	Size	Pack	Lbs	Case Cube	Unit Width	Unit Depth	Unit Height	UPC Code	Pallet Qty
QTPO123	QT	6	14	0.4	3.4"	3.4"	8.7"	0 30192 12315 7	528
GTPO123	GL	4	36	0.76	6.6"	4.1"	10.3"	0 30192 12325 6	208



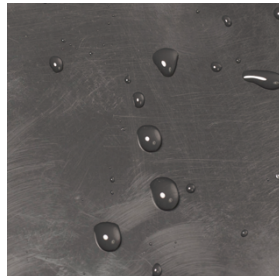


BULLDOG® Adhesion Promoter System

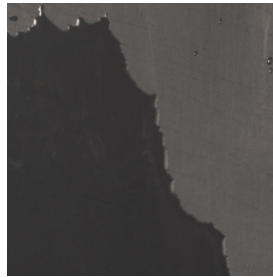
EPC535/PPC535 DIRECTIONS FOR USE:

Carefully read the entire product label and all precautions on the SDS before use. Proper preparation is critical to the success of all repairs. Follow these steps to achieve maximum performance.

1. Apply product using a wet gray scuff pad. Scuff entire bumper surface. Re-apply to scuff pad as needed to maintain a wet, soapy surface. While scuffing, be mindful to treat recessed areas and corners.
2. Rinse off thoroughly with clean water ensuring the surface is free of any loose particles.
3. To ensure part is ready for adhesion promoter application, mist a small area with water. If sheeting occurs, dry the surface and proceed. If water beads up, repeat cleaning as directed above.
4. Dry surface with cloth or forced air. Immediately before painting, wipe surface thoroughly with a clean tack cloth.



Beading



Sheeting

TECHNICAL DATA:	PPC535/EPC535
Appearance	Opaque gray
Percent Volatile	61% by weight
Flash Point	None
CPSC Flammability Classification	Non-Flammable, Waterbased
VOC Category (Max Allowable VOC)	General Purpose Degreaser (0.5%)
Actual VOC	0.0% by weight
Storage	Protect from freezing. Store between 32°F and 120°F, in the original container.
Density	9.8 lbs/gal
Shelf Life	2 years from date of manufacture, in an unopened container
DOT	Not Regulated

Product	Size	Pack	Lbs	Case Cube	Unit Width	Unit Depth	Unit Height	UPC Code	Pallet Qty
PPC535	16oz	12	13	0.47	3.4"	1.8"	8.3"	0 30192 12535 9	1368
EPC535	7.6 lb	4	34	1.14	7.6"	7.6"	7.6"	0 30192 01535 3	144

