



training



Sundström 
SR900
Modular respirator





Companion module:

SR900 modular respirator — **HOW TO...**

About your SR900 respirator:

What is it?

The SR900 is a half-face respirator that covers your nose and mouth, giving you effective breathing protection using filters or supplied air. The front of the face-piece has a bayonet fitting for filters or hoses. The mask body has two exhalation valves, and a head harness for holding the respirator securely against your face. When you breathe in, the air comes into the mask through the filter or from a source of clean air. When you breathe out, the air goes out through the exhalation valves. If your mask is properly fitted, no outside air leaks into the mask as you breathe.



What makes the SR900 different?

Unlike other half face respirators, the SR900 has a modular front attachment that lets you connect not only filters, but also breathing hoses leading to supplied air, or a battery-powered fan unit, or a remote filter holder worn on a waist belt around your back.



Why modular?

Because the SR900 can be connected to so many other sources of clean air, it lends itself to many more work situations and work environments than a mask that only uses filters.



Single and twin hose

You have a choice of single or twin hose connection to various devices. You may find the twin hose even easier to breathe through. On the other hand, the single hose may be simpler to keep out of the way as you work.



Use without a hose

The simplest connection option is to attach a filter holder directly to the mask through the bayonet fitting. In this way, the SR900 works like any conventional half-face mask with filters.



Connect to SR500 PAPR

Connecting the SR900 to The Sundström SR500 PAPR (Powered Air-Purifying Respirator) makes the work of breathing easier, as it is the fan unit — not your lungs — that draws the contaminated air through the filters. You can use a single or twin hose to connect to the SR500 PAPR (with gas or particle filters or both).



Connect to SR700 particle PAPR

Connecting the SR900 to The Sundström SR700 particle PAPR works in the same way as connecting to the SR500 PAPR (see above). However, you can only use particle filters with the SR700.



Connect to remote filter holder

You may benefit from using the remote filter holder worn on a waist belt around your back, away from pollutants, heat, sparks, spray or splashes that may occur in front of you while you work.

By using the remote filter holder, you also give the face-piece a very shallow profile that fits comfortably inside most welding shields.



Connect face-piece directly to SR507 supplied-air regulator

Connecting the SR900 respirator to a positive-pressure air supply from a compressor or pump raises the protection level significantly.

By using the Sundström SR507 regulator, you can connect the breathing hose directly between the regulator on your waist and the bayonet fitting on the face-piece.

In this configuration, only the single breathing hose can be used.



Connect face-piece to SR307 supplied-air regulator through filter adapter

Connecting the SR900 respirator to a positive-pressure air supply from a compressor or pump raises the protection level significantly.

By using the Sundström SR307 regulator and the SR900 filter attachment, you can connect the regulator's breathing hose to the face-piece through the adapter.



Does size matter?

The TPE (Thermo-Plastic Elastomer) material in the mask is so soft and pliable that it will fit almost anybody. But people's faces vary in many ways, not only in size but also in the shape of the cheekbones, nose and chin.

The SR900 comes in three sizes: Small, Medium and Large. One of them will fit your head better than the other and feel more comfortable and stable on your face.

The mask size may also influence the wear of other safety equipment, such as spectacles, goggles, ear muffs and face shields or visors. Make sure you try on your mask together with other protective equipment you normally wear.

S
M
L

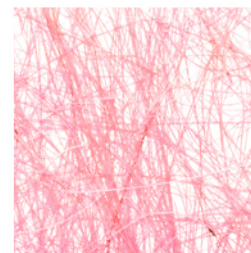
Where can the SR900 be used with filters?

Your SR900 half face respirator can be fitted with particle (dust) filters, gas filters, or combined dust and gas filters. Provided you are using the correct filters, your half mask can be used for:

- Nuisance dust
- Harmful dust
- Gas and vapour
- Viruses and bacteria
- Mould and fibre

This goes for all configurations where filters are used with the SR900:

- Filter directly attached to mask
- Remote filter holder
- SR500 PAPR fan unit with gas and/or particle filters
- SR700 PAPR fan unit with particle filter only



IMPORTANT: filter choice depends on the type of hazard.

- Particle filters do **NOT** protect against gas and vapour.
- Gas filters do **NOT** protect against particles.
- Certain gas filters protect **ONLY** against certain gases and vapours.



Where should you NOT use the SR900 fitted with filters?

There are a few situations where your half face respirator with filters cannot be used. In many of these situations, filter protection is inadequate, and you will need an external air supply:

- In oxygen-deficient areas (that is, there is not enough oxygen in the air for human breathing)
- Where the atmosphere is Immediately Dangerous to Life and Health (IDLH)
- Where the concentration of the hazard is too great to use a half mask or filter protection according to your local laws and regulations



Using the SR900 with other breathing devices

For information on other breathing devices such as PAPRs and supplied-air equipment, please see separate training modules on those devices.



One mask — one user

Your mask is a personal item. Do not share masks with others, and always store your own respirator in a place where it can't be mixed up with other masks.

The best way to keep track of your own mask is to use masks fitted with an ID tag. The tag makes sure that your mask won't be mistaken for someone else's.

The SR900 is fitted with a slot where you can fasten a barcode or ID tag.



Before fitting the respirator:

- Make sure your face is clean shaven and washed.
- Check the mask for any damage.
- Ensure that the mask is clean and dry.
- Check that the filter/cartridge is properly fitted.
- Make sure that you are using the correct filter/cartridge.
- Perform a leakage test.



Tell your supervisor IMMEDIATELY if...

- you experience any problems breathing through your respirator.
- you have troubles wearing the respirator together with other safety gear (hardhat, goggles, ear muffs etc.)
- you notice any damage to the mask.
- the leakage test doesn't work.
- you are unsure of use or maintenance of the respirator.



Watch this on **YouTube**
(using your SmartPhone, tablet or computer)



<https://youtu.be/ZQYfQSF53bk>
