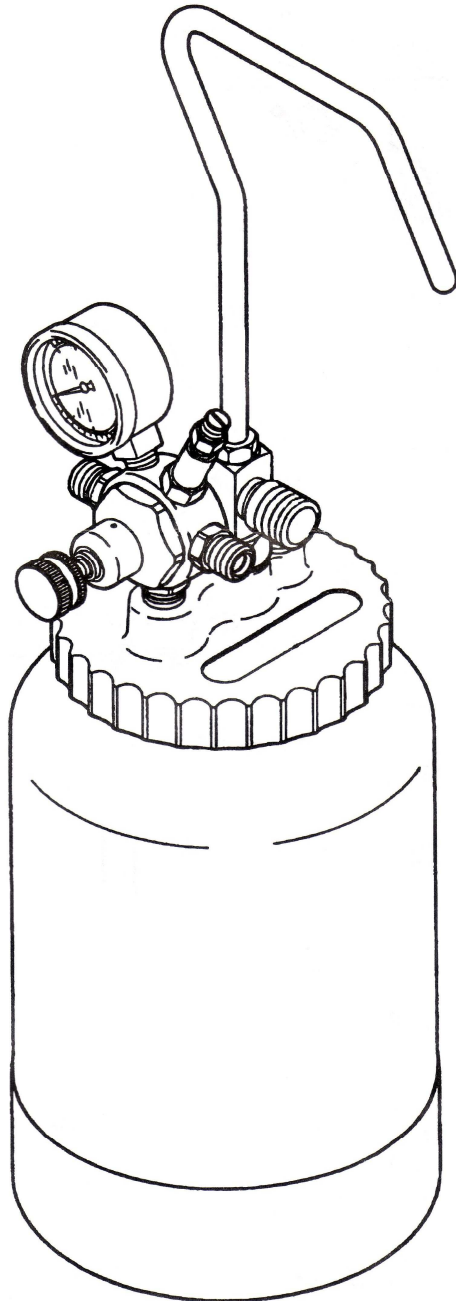


# PT.2

# Instruction Manual



This instruction manual contains important information about safety precautions, warnings, cautions and instructions for safe operation. Before operation, be sure to read this instruction manual thoroughly so that you can use our product safely and effectively for a long time. Keep this booklet in an appropriate place for immediate reference.

## DESCRIPTION

This 2 litre pressure tank provides pressurized material. This tank is equipped with an air regulator, gauge, safety valve, release valve and fluid outlet.

This tank can be used for delivery of material other than paint.

**It is not designed for use with highly abrasive, corrosive or rust inducing materials.**

### **WARNING - DO NOT USE**

**ANY HALOGENATED HYDROCARBON SOLVENTS eg METHYL CHLORIDE**

**ANY INFLAMMABLE OR TOXIC PRODUCTS eg PETROL, KEROSENE**

**ANY HERBICIDES OR PESTICIDES**

**ANY RADIOACTIVE FLUID**

## INSTALLATION

*Follow the manufacturers recommendations for the mixing preparation of the material. Strain the material using a fine mesh screen in order to prevent the entry of foreign matter and clogging of the passages.*

1. Always relieve all air pressure in the tank by loosening air release valve Part 26, until no air pressure remains in the container—the gauge will read ‘0’.
2. Unscrew the lid assembly and remove.
3. Pour material into the tank.
4. Replace lid assembly and tighten securely.
5. It is best for the air supply line to pass through a filter element to remove any dirt, water and oil. Connect the air supply line to the air inlet fitting on the regulator.
6. Attach the atomizing air hose to the air outlet on the tank regulator. This is directly opposite the air inlet fitting.
7. Connect the material hose to the fluid outlet fitting.

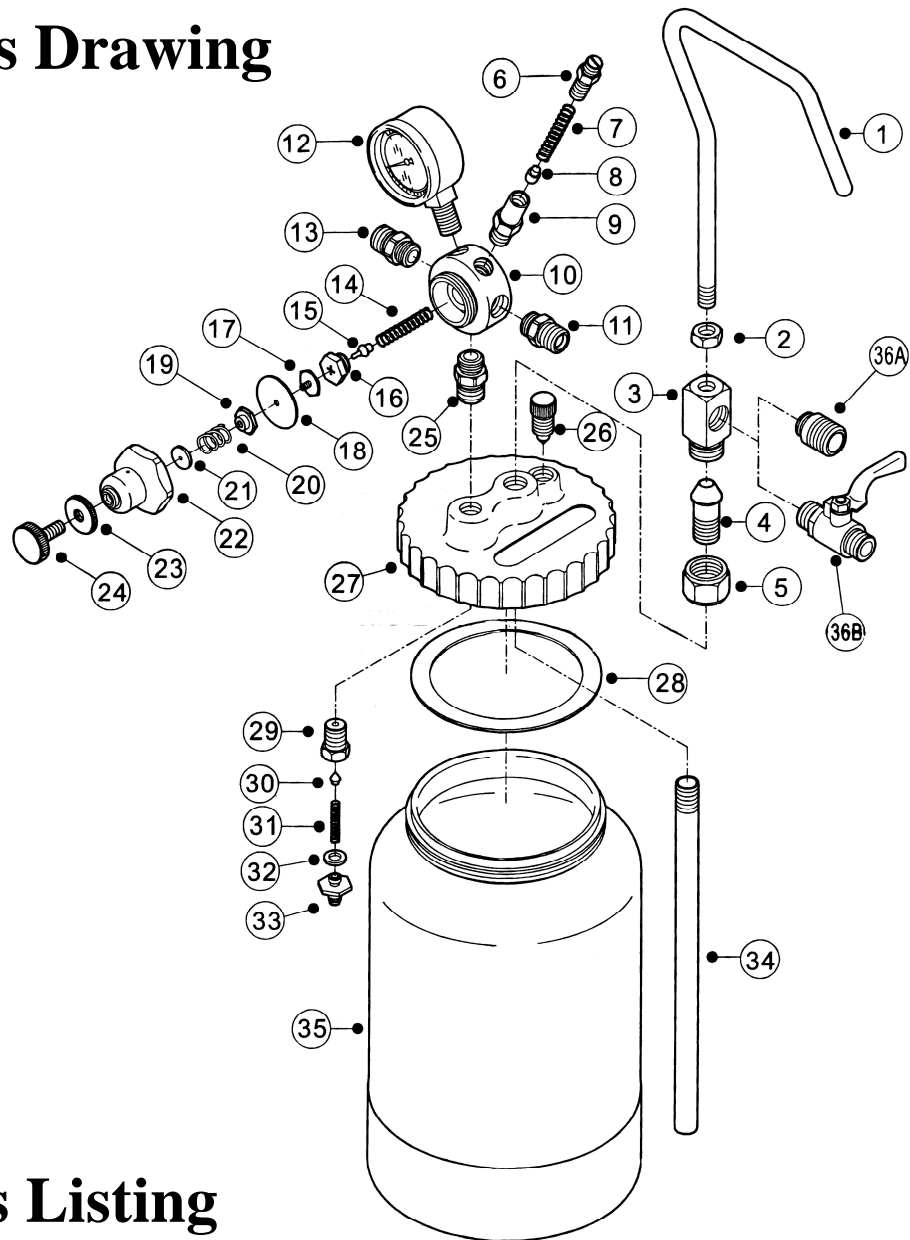
## OPERATION

1. Turn on the air supply and adjust air pressure to approximately 45 psi.
2. Turn the handle adjusting screw clockwise on the air regulator to increase material pressure.  
NOTE: IT IS RECOMMENDED THAT MATERIAL PRESSURE BE KEPT AS LOW AS POSSIBLE - NORMAL OPERATING PRESSURE SHOULD NOT EXCEED APPROX 15 PSI.
3. **WARNING - Air pressure loads higher than design loads, or alterations to the pressure tank can result in tank rupture or explosion. Do not make any changes to the pressure tank. Do not weld, drill or otherwise tamper with the pressure tank.**
4. A safety valve protects the tank from over pressurization. Prior to each use pull the ring on the safety valve to check it operates freely and relieves air pressure. If it does not operate freely or does not relieve air pressure it must be replaced. Do not discard or make adjustments to this valve.
5. Atomization air for the spray gun should be adjusted with the use of an air adjusting valve attached to the air inlet of the spray gun.
6. Operate the spray gun according to the manufacturers recommendations..
7. To refill paint always relieve all air pressure in the tank by loosening air release valve Part 26, until no air pressure remains in the container.
8. Unscrew the lid assembly and remove.
9. Pour material into the tank.
10. Replace lid assembly and tighten securely.

## MAINTENANCE AND CLEANING

1. Turn off the air supply to the tank.
2. Relieve all air pressure in the tank by loosening air release valve until no air pressure remains.
3. Remove the lid from paint tank and empty remaining material.
4. Clean tank and parts which come into contact with paint with a suitable solvent.
5. Pour solvent into tank and replace lid.
6. Spray until clean solvent appears.
7. Repeat steps 3 and 4 as necessary.

# PT.2 Parts Drawing



# PT.2 Parts Listing

Item	Part Number	Description
01	PT2.01	Hook
02	PT2.02	Nut
03	PT2.03	Outlet Fitting
04	PT2.04	Centre Post
05	PT2.05	Centre Post Nut
06	PT2.6	Adjusting Screw
07	Pressure Relief Valve Includes Parts 6 - 9	Spring
08		Ball
09		Safety Valve Body
10		Air Housing
11	PT2.11	Air Outlet
12	PT2.2.2	Air Pressure Gauge
13	PT2.13	Air Inlet
14		Spring
15		Valve Stem
16		Valve Screw
17		Screw
18	PT2.18	Washer
19		Screw
20		Spring
21		Washer

Item	Part Number	Description
22		Lock Screw
23	PT2.23	Adjusting Nut
24	PT2.24	Adjusting Screw
25	PT2.25	Screw
	PT2.2	Regulator Set Complete - No Gauge Includes Parts 10 - 25
26		Air Release Valve
27		Cover
28	PT2.28	Gasket
29	PT2.5	Screw
30	Check Valve Complete Includes Parts 29 - 33	Stopper
31		Spring
32		Washer
33		Screw
34		PT2.34
35	PT2.35	Cup
36A	PT2.36A	Paint Outlet Screw
36B	PT2.36B	Lock

# Troubleshooting

Problems	Causes	Remedies
Paint does not come out.	<ul style="list-style-type: none"> <li>①Paint clogs.</li> <li>②Container is not pressurized.</li> <li>③Paint viscosity is too high.</li> <li>④Check valve is stuck with paint.</li> </ul>	<ul style="list-style-type: none"> <li>①Clean paint passages.</li> <li>②Air is not supplied. Increase air pressure at air regulator.</li> <li>③Dilute paint.</li> <li>④Clean. (Refer to [6. Maintenance and inspection])</li> </ul>
Air leaks.	<ul style="list-style-type: none"> <li>①Release valve is opened.</li> <li>②Safety valve operates.</li> <li>③Lid packing is damaged.</li> <li>④Connection is loose.</li> <li>⑤Diaphragm of air regulator is damaged.</li> </ul>	<ul style="list-style-type: none"> <li>①Close it.</li> <li>②Reduce pressure at air regulator to less than 0.34Mpa.</li> <li>③Replace it.</li> <li>④Tighten leaky section.</li> <li>⑤Replace it.</li> </ul>
Paint leaks.	<ul style="list-style-type: none"> <li>①Container set is damaged.</li> <li>②Connection is loose.</li> <li>③Too much paint in container.</li> <li>④Check valve is out of order.</li> <li>⑤Lid packing is damaged.</li> </ul>	<ul style="list-style-type: none"> <li>①Replace it.</li> <li>②Tighten leaky section.</li> <li>③Reduce its volume to 80% of full capacity.</li> <li>④Disassemble and replace if necessary.</li> <li>⑤Replace lid packing.</li> </ul>

ANEST IWATA Australia Pty Ltd  
 33/ 71 Kurrajong Ave, Mt. Druitt 2770  
 Phone: 02 9853 2000, Fax: 02 9853 2090  
 Web: [www.anest-iwata.com.au](http://www.anest-iwata.com.au)  
 email: [info@anest-iwata.com.au](mailto:info@anest-iwata.com.au)

