



FILTER – REGULATOR

MODEL FR202/204

DESCRIPTION

The filter / Regulator is a two part system. The filter is designed to remove most of the liquid and solid particles from the air supply. The self-relieving pressure regulator is used to adjust the outlet pressure between 0-150psi.

SPECIFICATIONS

Max. Temperature:	60°C / 140°F	Max Input Pressure:	215 psi	Max Output Pressure:	150 psi
Air Inlet / Outlet:	FR202 1/4"	FR204 1/2"	Gauge Ports:	1/8"	
Max Flow Rates:	FR202: 60 CFM/ 1750 LPM	FR204: 105 CFM/ 3000 LPM			

UNPACKING

After unpacking the unit, inspect carefully for any damage that may have occurred during transit. Make sure to tighten fittings, bolts, etc., before putting unit into service.

SAFETY GUIDELINES

This manual contains information that is very important to know and understand. This information is provided for SAFETY and to PREVENT EQUIPMENT PROBLEMS. To help recognize this information, observe the following symbols.

DANGER

Danger indicates an imminently hazardous situation which, if not avoided, will result in death or serious injury.

WARNING

Warning indicates a potentially hazardous situation which, may result in minor or moderate injury.

CAUTION

Caution indicates a potentially hazardous situation which, if not avoided, may result in minor or moderate injury.

GENERAL SAFETY INFORMATION

This product is part of a high pressure system and the following safety precautions must be followed at all times along with any other existing safety rules.

Read this instruction manual before installing this device to the air supply system. Be thoroughly familiar with the controls and the proper use of the equipment.

1. Safety glasses must be worn during operation. Always work in a well-ventilated area.
2. Do not exceed any pressure rating of any component in the system.
3. Protect air lines from damage and/or punctures.
4. Check air hose for weak or worn condition before each use. Make sure all connections are secure.
5. Keep all nuts, bolts and screws tight and ensure equipment is in safe working condition.

DANGER

This product is specifically designed for compressed air service ONLY. Use with any other material (liquid or gas) is a misapplication and not permitted. Use or injection of certain hazardous liquids or gases in the system (such as oxygen. Alcohol or liquid petroleum gas) will harm the unit and result in a combustible or hazardous external leakage. Misapplication will void all warranties and manufacturer's responsibilities.

DANGER

The relief flow capacity of regulators is limited. Install additional pressure relief devices to alleviate over pressurized conditions. Written approval must be obtained from the manufacturer if this device is to be used for life support systems or other non-industrial applications.

INSTALLATION

1. The assembly of all calibration shall meet the maximum flow requirement.
2. Direction air flow in the triangle "►" on the primary unit.
3. Position water discharge, the triangle "▼" downward.
4. Site as close to the unit to be protected as possible.
5. Place free of direct sun shine, hot area, and hazardous chemicals.
6. The water drainage shall be deployed beneath the water discharge for outlet of water into a proper area.

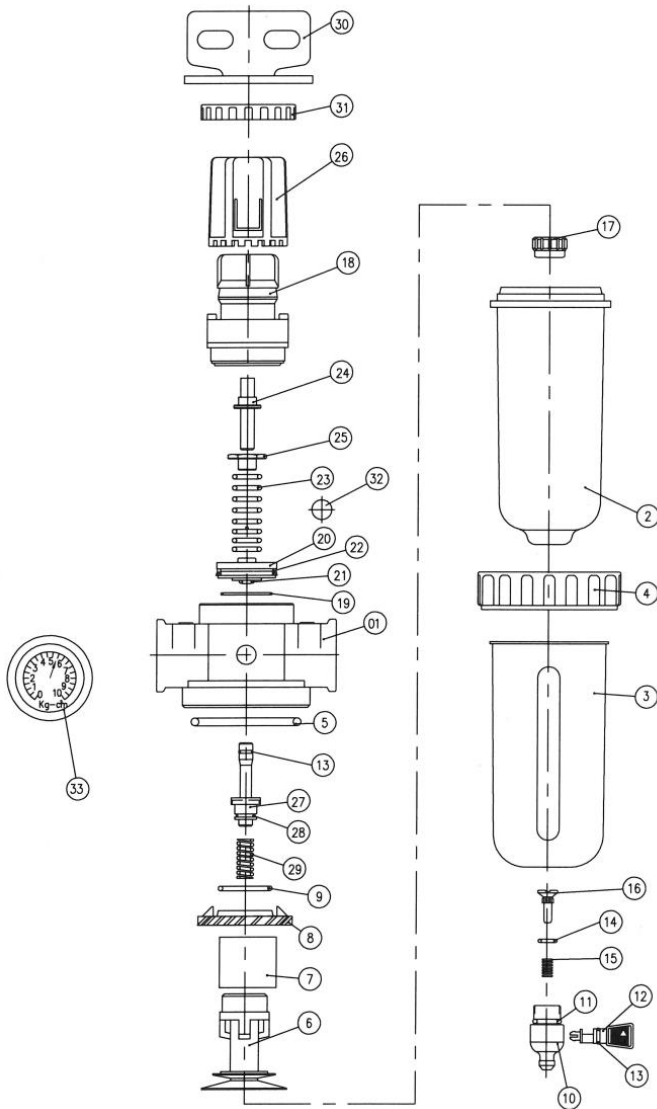
OPERATION/MAINTENANCE

1. Before pressurizing system, make certain the bowl is securely locked in place by hand tightening the bowl ring until it is snug.
2. Unlock the regulator adjusting knob by pulling knob away from the regulator.
3. Turn the regulator adjusting knob counter-clockwise until no load is on the regulating spring.
4. Turn on the air pressure supply and turn the adjusting knob clockwise until the desired outlet pressure is reached. Push the regulator adjusting knob toward the regulator to lock in desired pressure.
5. Inspect and replace cracked, damaged or deteriorated seals. Wipe bowls with soft, dry cloth to clean.
6. Replace filter element when filter element becomes dirty and the flow and filter are less effective.
7. Drain bowls at least once per work shift to avoid spray or splatter, cover bottom of filter with a cloth and turn the manual drain.
8. Before placing the unit in service, make sure the bowl is reinstalled and securely in place.

9. Drainage:
- If no pneumatic pressure, water will discharge.
 - When there is pneumatic pressure coming, discharge will be stopped automatically. When water exceeds the level, please drain off the water manually by turning off the part 12 to "▼" then water will be discharged. After drainage is done, please turn the part 12 to "▲".
 - When the water level exceeds the maximum limit, please drain off the water to keep optimal dehumidification.

LIMITED WARRANTY

- DURATION:** From the date of purchase by the original purchaser as follow: One Year. If this product is used for commercial, industrial or rental purposes, the warranty will apply for ninety (90) days from the date of purchase.
- WHAT IS COVERED UNDER THIS WARRANTY:** Substantial defects in material and workmanship which occur within the duration of the warranty period.
- WHAT IS NOT COVERED UNDER THIS WARRANTY:**
 - Implied warranties, including those of merchantability and FITNESS FOR A PARTICULAR PURPOSE ARE LIMITED FROM THE DATE OF PURCHASE AS STATED IN THE DURATION.
 - ANY INCIDENTAL, INDIRECT, OR CONSEQUENTIAL LOSS, DAMAGE, OR EXPENSE THAT MAY RESULT FROM ANY DEFECT, FAILURE, OR MALFUNCTION OF THE PRODUCT.
 - Any failure that results from an accident, purchaser's abuse, neglect or failure to operate products in accordance with instructions provided in the owner's manual(s) supplied with product. Accident, purchaser's abuse, neglect or failure to operate products in accordance with instructions shall also include the removal or alteration of any safety devices. If such safety devices are removed or altered, this warranty is void.
 - Normal adjustments which are explained in the owner's manual(s) provided with the product.
 - Items or service that are normally required to maintain the product, i.e. O-rings, springs, debris shields, gaskets, packing's or seals, filter elements, abrasives, or any other expendable part not specifically listed. These items will only be covered for ninety (90) days from the date of original purchase.
- RESPONSIBILITIES OF WARRANTOR UNDER THIS WARRANTY:** Repair or replace, at warrantor's option, products or components which are defective, have malfunctioned and/or failed to conform within duration of the warranty period.
- RESPONSIBILITIES OF THE PURCHASER UNDER THE WARRANTY:**
 - Provide dated proof of purchase and maintenance records.
 - Deliver or ship the product. Freight costs, if any, must be borne by the purchaser.
 - Use reasonable care in the operation and maintenance of the products as described in the owner's manual(s)



Item Number	Description	Part Number
01	Body	FR202.01
02	Bowl	FR202.02
03	Shatter Guard	FR202.03
04	Retaining Ring	FR202.04
05	Bowl O Ring	FR202.05
06	Bowl Baffle	FR202.06
07	Filter Element 5 Um	FR202.07
08	Interceptor	FR202.08
09	O Ring	FR202.09
10	Drain Body	FR202.10
11	O Ring	FR202.11
12	Valve	FR202.12
13	O Ring	FR202.13
14	O Ring	FR202.14
15	Spring	FR202.15
16	Piston	FR202.16
17	Nut	FR202.17
18	Dome	FR202.18
19	O Ring	FR202.19
20	Piston	FR202.20
21	O Ring	FR202.21
22	V Ring	FR202.22
23	Spring	FR202.23
24	Adjusting Screw	FR202.24
25	Nut	FR202.25
26	Knob	FR202.26
27	Valve	FR202.27
28	O Ring	FR202.28
29	Spring	FR202.29
30	Bracket	FR202.30
31	Fixed Ring	FR202.31
32	Nut	FR202.32
33	Gauge	FR202.33



ANEST IWATA Australia Pty Ltd
 Unit 33/ 71 Kurrajong Ave, Mt. Druitt NSW 2770
 Phone: 1300 277 729 Fax: 02 9853 2090